

Intelligent Display System (IDS)

Design | Manage | Control



IDS gives you complete control over your broadcast station displays. It replaces expensive, custom-built hardware with an elegant, expandable display solution, integrated with your existing Ethernet, GPI and scheduling infrastructure.



Powerful design

From essential screen elements like clocks, cue lamps and scrolling text, to live video, RSS feeds and web pages, IDS Screen Designer presents your information – your way.



Complete control

IDS Logic Builder takes your carefully-crafted screen layouts and implements them using logic maps, connecting virtual screen elements to real GPIO signals and IDS Cue Lamp controls.



Easy management

IDS Connected Devices configures your SQuids, Remoras and other IDS accessories. Specify IP addressing and NTP servers, assign logic maps – all from a central location.



System scalability

IDS is modular and highly expandable, handling anything from a single display to a building-wide solution. It is compatible with industry-standard interfaces and third-party devices.

Software Version 2.4 coming!



Flexible IDS Software

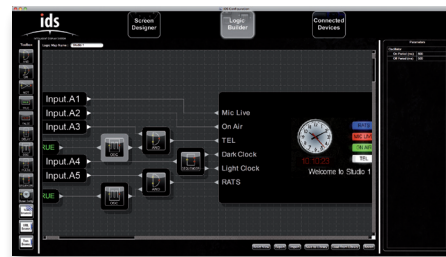
Intuitive | Logical | Versatile

Clocks, count-downs, cue lights and other display elements have traditionally required cumbersome hand-crafted units. IDS Software lets you design, control and deliver rich, critical information over your network via off-the-shelf display products.



IDS Screen Designer

IDS Screen Designer's intuitive drag-and-drop interface lets you create and save any number of informative, eye-catching display layouts. Customise your clocks, cue lights etc. to suit different environments. Choose from a rich array of design elements, including video feeds, web pages and countdown timers.



IDS Logic Builder

IDS Logic Builder takes your screen designs and lets you map their virtual inputs and outputs to real GPI signals, video feeds and time signals, by routing them to physical ports on IDS Squids and other IDS accessories. The built-in logic gates, signal manipulation elements and IO controls provide endless possibilities for logic maps to drive your displays.



IDS Connected Devices

IDS Connected Devices completes the circuit – allowing you to assign completed logic maps to the IDS Remoras controlling physical display devices and IDS accessories. The beauty of IDS lies in its ease-of-use and centralised management. Using IDS Configuration Software you can design, configure and deliver your broadcast information to a display device located anywhere on your IT network.



Finished screen display

Completed logic maps deliver your time-critical broadcast information to off-the-shelf displays throughout your IDS network, and control IDS accessories such as Cue Lamps and Noise Level Monitors. Wherever there's an Ethernet connection, you can tap into the power of IDS.

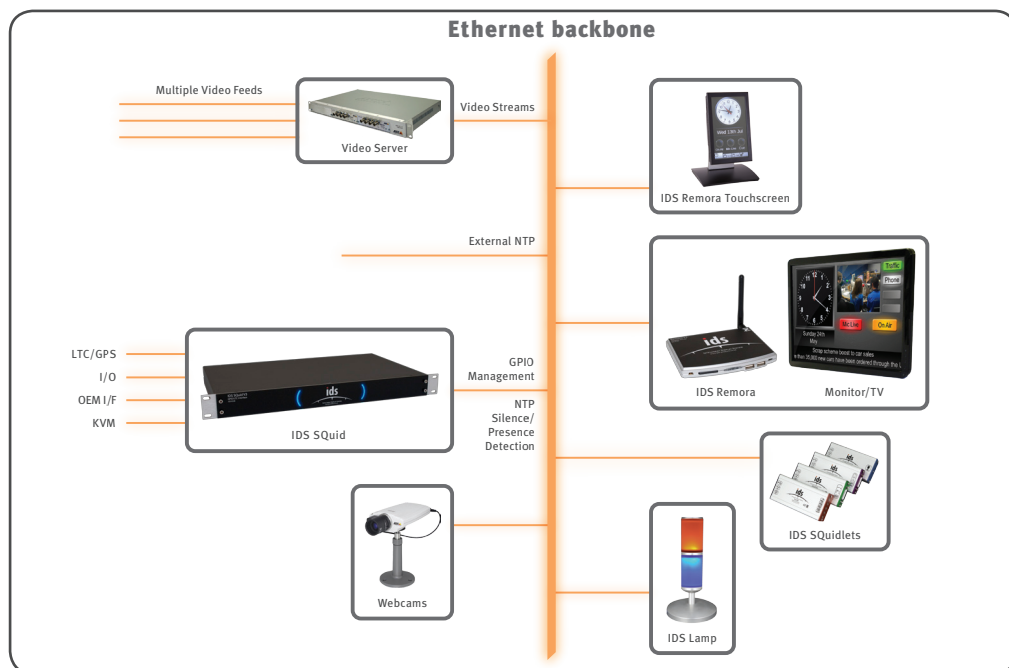


Scalable IDS Hardware

Modular | Versatile | Powerful

IDS hardware devices integrate nicely with your existing broadcast infrastructure – communicating over Ethernet and synchronising using NTP/LTC. Hook into your distribution frame, or hardwire GPIO connections directly for a clutter free solution.

A typical IDS installation



IDS Squid v3 provides dual redundant hot-swap PSU's as standard. An integral part of your IDS network, it accepts LTC timecode locally, keeping all your IDS displays in perfect sync with each other, and with your station's time reference.

The discrete IDS Remora v3 can deliver crystal clear 1080P video or multiple video streams simultaneously. They feature wireless 802.11n transmission, passive cooling and consume less than 6W.

The IDS Lamp is an elegant, six-colour LED. Available in four styles, it indicates broadcast status and other warnings. PoE and IDS connectivity is via a single Ethernet port so separate GPI control is not required.

IDS Squidlets extend IDS functions to include noise level monitoring, infra-red device control, dual timecode channels and further GPIO.

See separate datasheets for full spec.

